

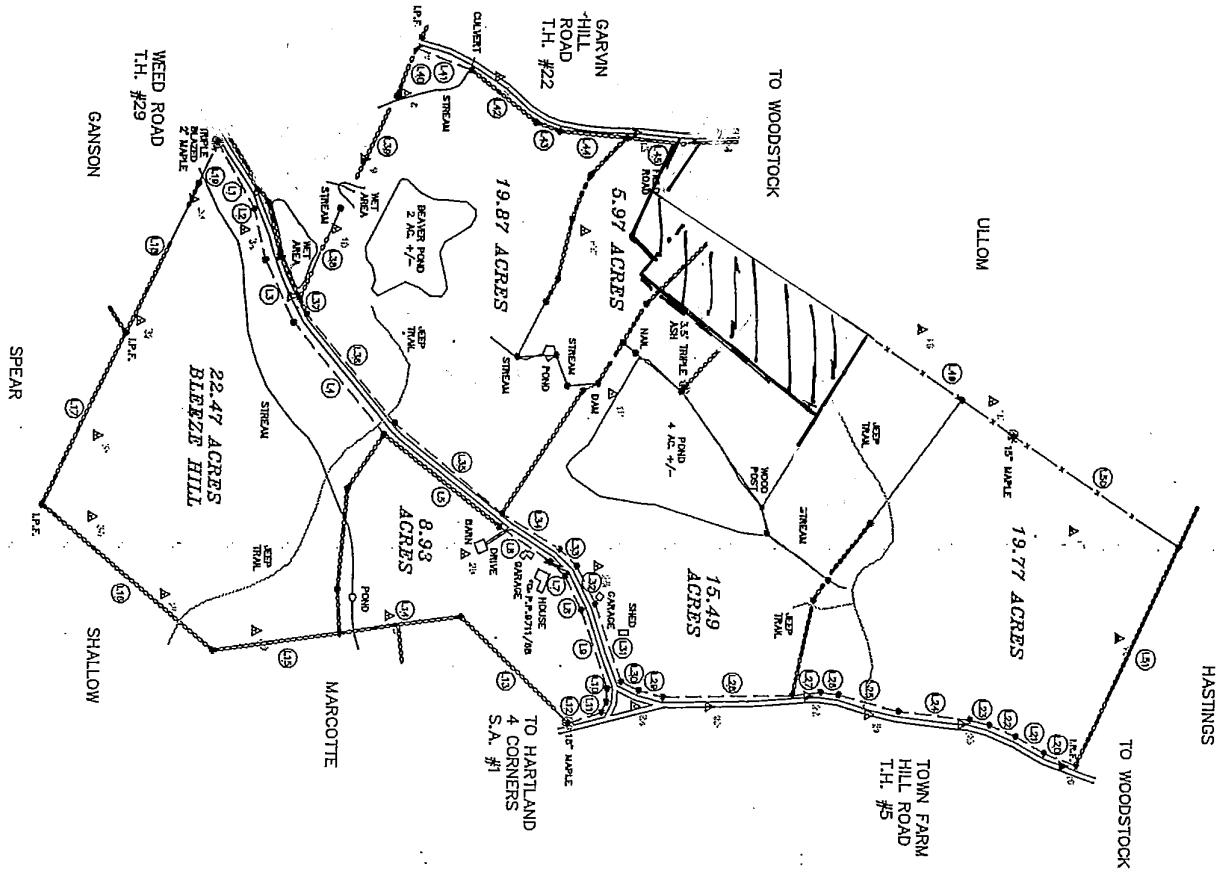
BOUNDARY DATA
TOTAL LAND EAST OF WEED RD.
31.40 ACRES

LINE	DIRECTION	DISTANCE
1	N 88° 51' 00" W	147.20
2	N 88° 51' 00" W	147.20
3	N 88° 51' 00" W	147.20
4	N 88° 51' 00" W	147.20
5	N 88° 51' 00" W	147.20
6	N 88° 51' 00" W	147.20
7	N 88° 51' 00" W	147.20
8	N 88° 51' 00" W	147.20
9	N 88° 51' 00" W	147.20
10	N 88° 51' 00" W	147.20
11	N 88° 51' 00" W	147.20
12	N 88° 51' 00" W	147.20
13	N 88° 51' 00" W	147.20
14	N 88° 51' 00" W	147.20
15	N 88° 51' 00" W	147.20
16	N 88° 51' 00" W	147.20
17	N 88° 51' 00" W	147.20
18	N 88° 51' 00" W	147.20
19	N 88° 51' 00" W	147.20
20	N 88° 51' 00" W	147.20
21	N 88° 51' 00" W	147.20
22	N 88° 51' 00" W	147.20
23	N 88° 51' 00" W	147.20
24	N 88° 51' 00" W	147.20
25	N 88° 51' 00" W	147.20
26	N 88° 51' 00" W	147.20
27	N 88° 51' 00" W	147.20
28	N 88° 51' 00" W	147.20
29	N 88° 51' 00" W	147.20
30	N 88° 51' 00" W	147.20
31	N 88° 51' 00" W	147.20
32	N 88° 51' 00" W	147.20
33	N 88° 51' 00" W	147.20
34	N 88° 51' 00" W	147.20
35	N 88° 51' 00" W	147.20
36	N 88° 51' 00" W	147.20
37	N 88° 51' 00" W	147.20
38	N 88° 51' 00" W	147.20
39	N 88° 51' 00" W	147.20
40	N 88° 51' 00" W	147.20
41	N 88° 51' 00" W	147.20
42	N 88° 51' 00" W	147.20
43	N 88° 51' 00" W	147.20
44	N 88° 51' 00" W	147.20
45	N 88° 51' 00" W	147.20
46	N 88° 51' 00" W	147.20
47	N 88° 51' 00" W	147.20
48	N 88° 51' 00" W	147.20
49	N 88° 51' 00" W	147.20
50	N 88° 51' 00" W	147.20

BOUNDARY DATA
TOTAL LAND WEST OF WEED RD.
74.78 ACRES

LINE	DIRECTION	DISTANCE
1	N 88° 51' 00" W	147.20
2	N 88° 51' 00" W	147.20
3	N 88° 51' 00" W	147.20
4	N 88° 51' 00" W	147.20
5	N 88° 51' 00" W	147.20
6	N 88° 51' 00" W	147.20
7	N 88° 51' 00" W	147.20
8	N 88° 51' 00" W	147.20
9	N 88° 51' 00" W	147.20
10	N 88° 51' 00" W	147.20
11	N 88° 51' 00" W	147.20
12	N 88° 51' 00" W	147.20
13	N 88° 51' 00" W	147.20
14	N 88° 51' 00" W	147.20
15	N 88° 51' 00" W	147.20
16	N 88° 51' 00" W	147.20
17	N 88° 51' 00" W	147.20
18	N 88° 51' 00" W	147.20
19	N 88° 51' 00" W	147.20
20	N 88° 51' 00" W	147.20
21	N 88° 51' 00" W	147.20
22	N 88° 51' 00" W	147.20
23	N 88° 51' 00" W	147.20
24	N 88° 51' 00" W	147.20
25	N 88° 51' 00" W	147.20
26	N 88° 51' 00" W	147.20
27	N 88° 51' 00" W	147.20
28	N 88° 51' 00" W	147.20
29	N 88° 51' 00" W	147.20
30	N 88° 51' 00" W	147.20
31	N 88° 51' 00" W	147.20
32	N 88° 51' 00" W	147.20
33	N 88° 51' 00" W	147.20
34	N 88° 51' 00" W	147.20
35	N 88° 51' 00" W	147.20
36	N 88° 51' 00" W	147.20
37	N 88° 51' 00" W	147.20
38	N 88° 51' 00" W	147.20
39	N 88° 51' 00" W	147.20
40	N 88° 51' 00" W	147.20
41	N 88° 51' 00" W	147.20
42	N 88° 51' 00" W	147.20
43	N 88° 51' 00" W	147.20
44	N 88° 51' 00" W	147.20
45	N 88° 51' 00" W	147.20
46	N 88° 51' 00" W	147.20
47	N 88° 51' 00" W	147.20
48	N 88° 51' 00" W	147.20
49	N 88° 51' 00" W	147.20
50	N 88° 51' 00" W	147.20

TOTAL LAND SURVEYED = 106.18 ACRES

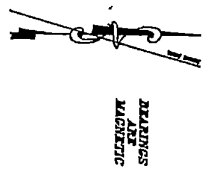


TO HARTLAND/
BROWNSVILLE RD.
S.A. #1

SPEAR

SHALLOW

NEARBY
NOV. 6, 1980 D.L.R.



- LEGEND
- Property Lines
 - Stonewalls
 - Round Right of Ways
 - Turnover Points
 - Ground Points
 - Iron Pins Found
 - Iron Rods Found
 - Iron Pins Set
 - Power Poles

CERTIFICATION:
This survey was based on monumentation found, topographic evidence and dead information. Bearings shown are referenced to a magnetic meridian and serve only to define angular relations. The method of survey was with a Total Station.

Robert W. Farnsworth, R.L.S. #21



LAND SURVEYORS FOR	
HARTLAND	VERMONT
PAINESTORSE SURVEYS	
30-335	100 STATE ST.
	WATERBURY, VT. 05671
	DATE: OCTOBER 31, 1980
	SCALE: AS SHOWN
	BY: FARNSTORSE